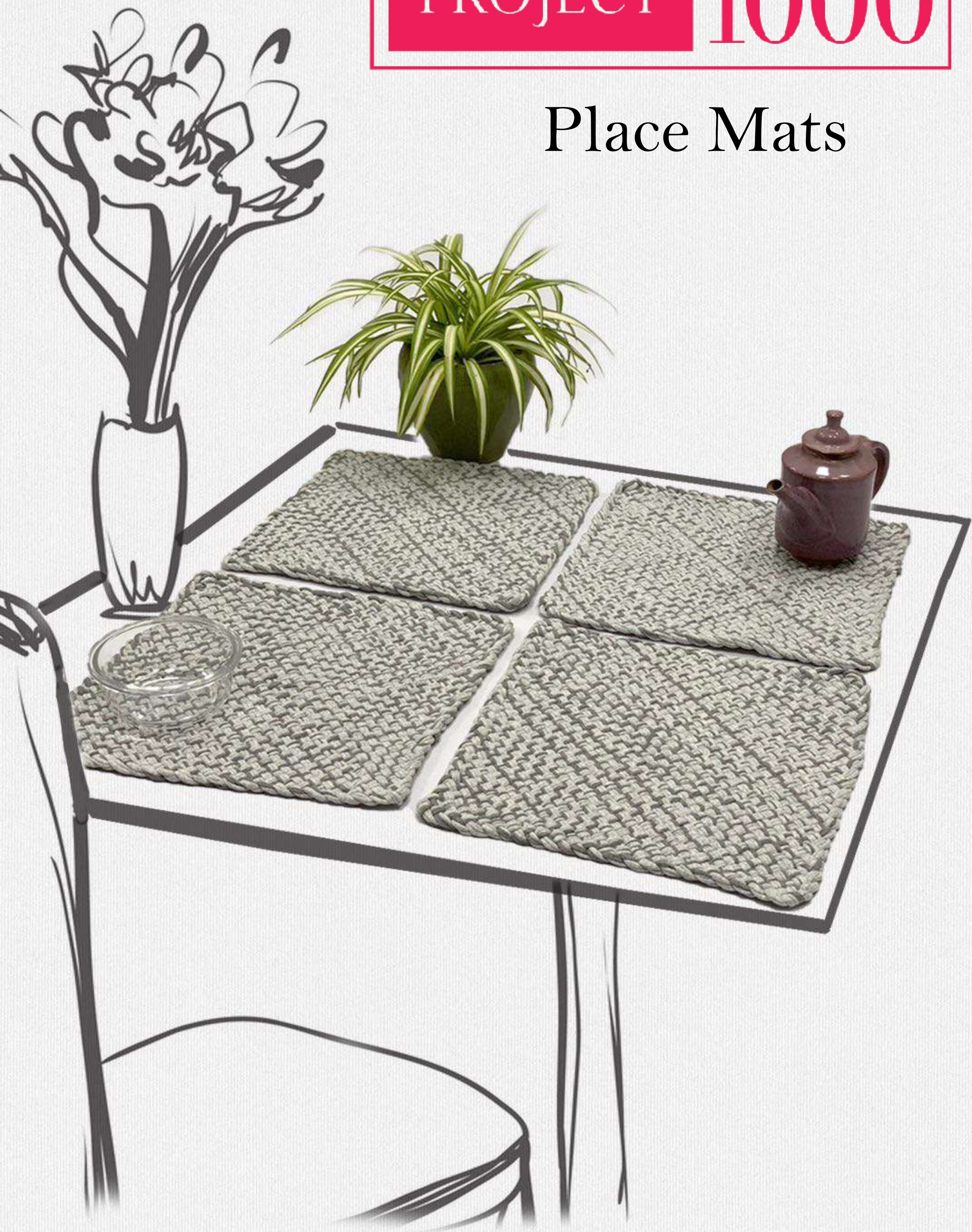


PROJECT 1000[®]

Place Mats



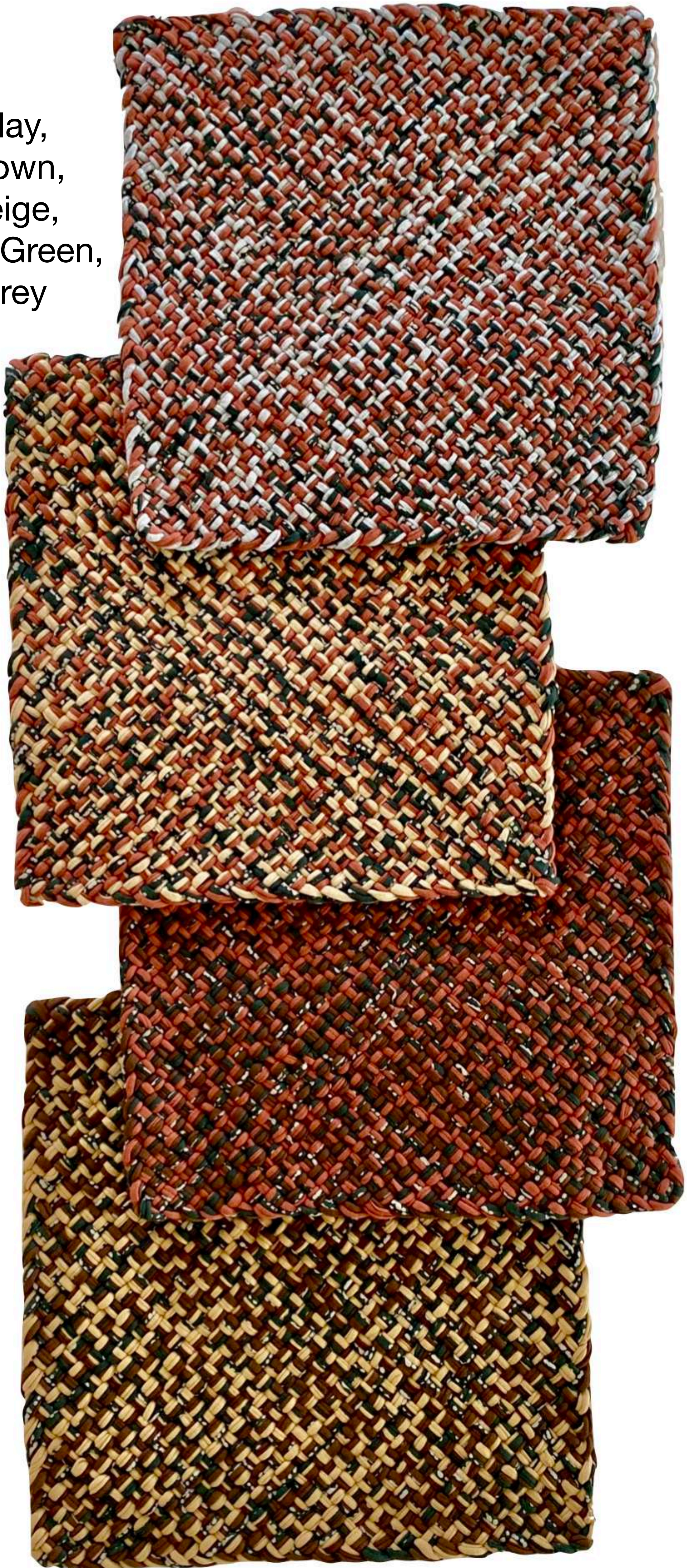
14" X 14"

Rs 1499/-

**SET OF 4
DINING MATS**



Clay,
Brown,
Beige,
Dark Green,
Grey



14" X 14"

Rs 1499/-

**SET OF 4
DINING MATS**



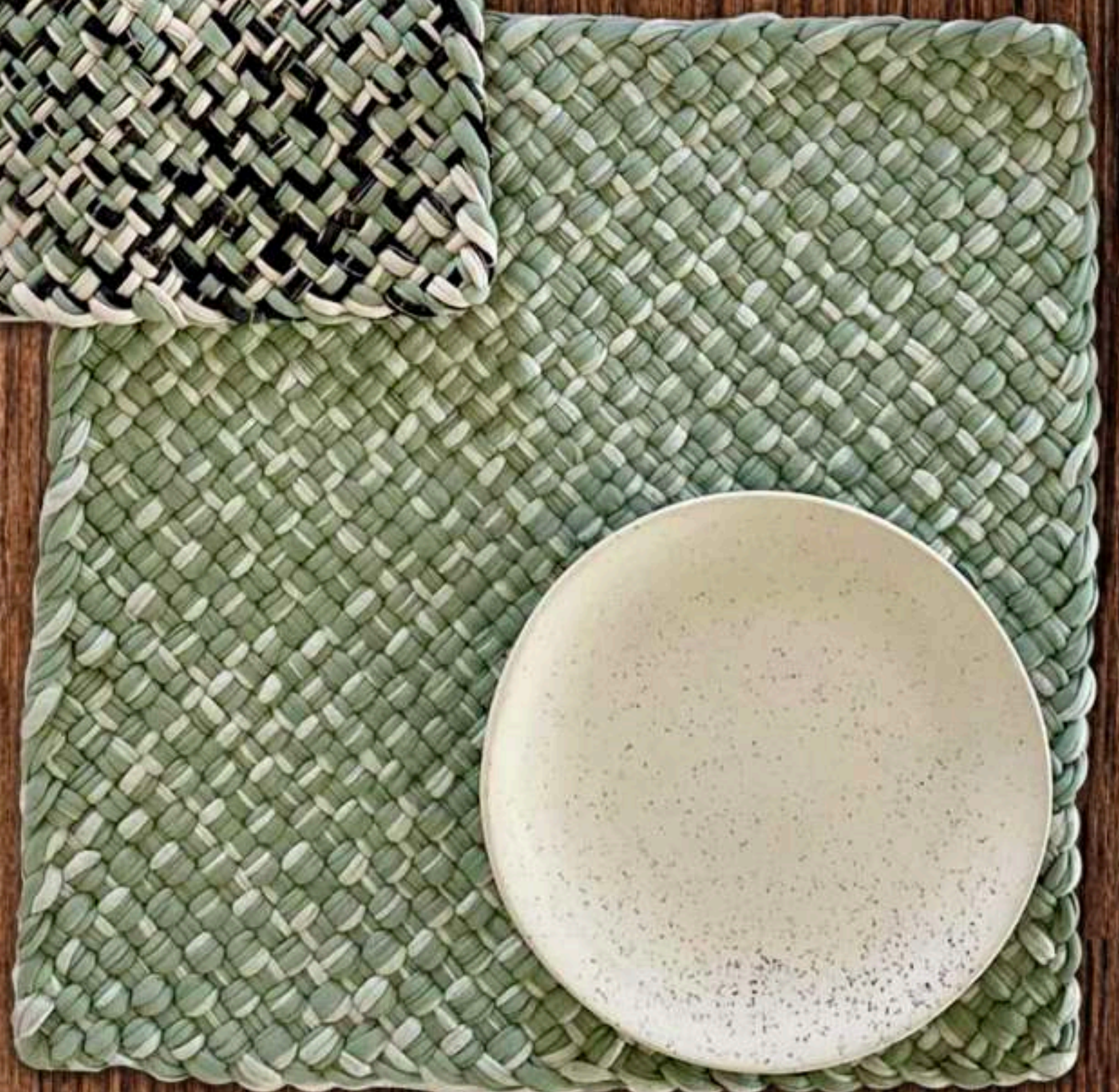
Mustard,
Maroon,
Brown, Beige,
Blues, Grey



14" X 14"

Rs 1499/-

SET OF 4
DINING MATS



Mint, Teal,
Grey, Charcoal



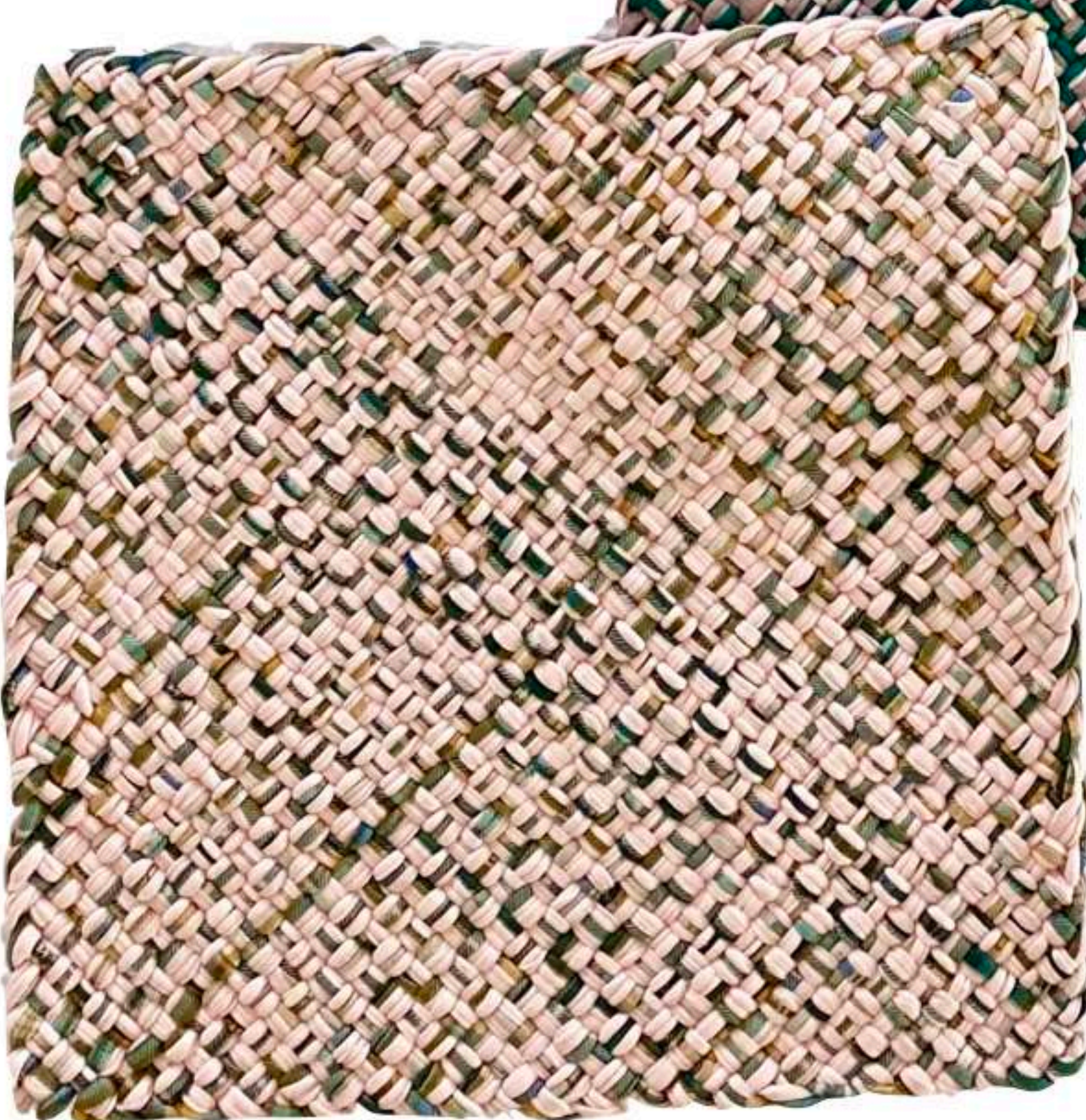
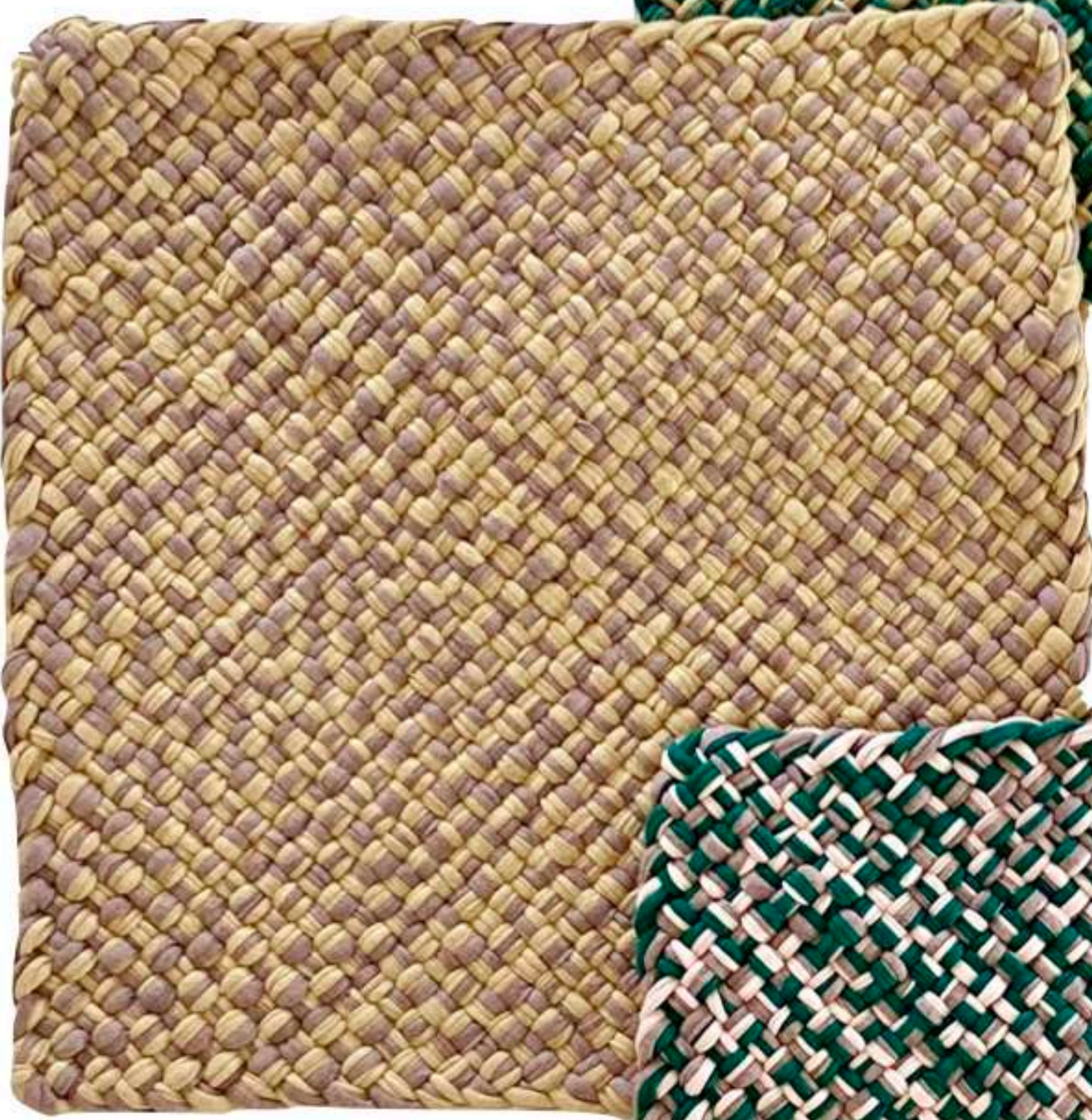
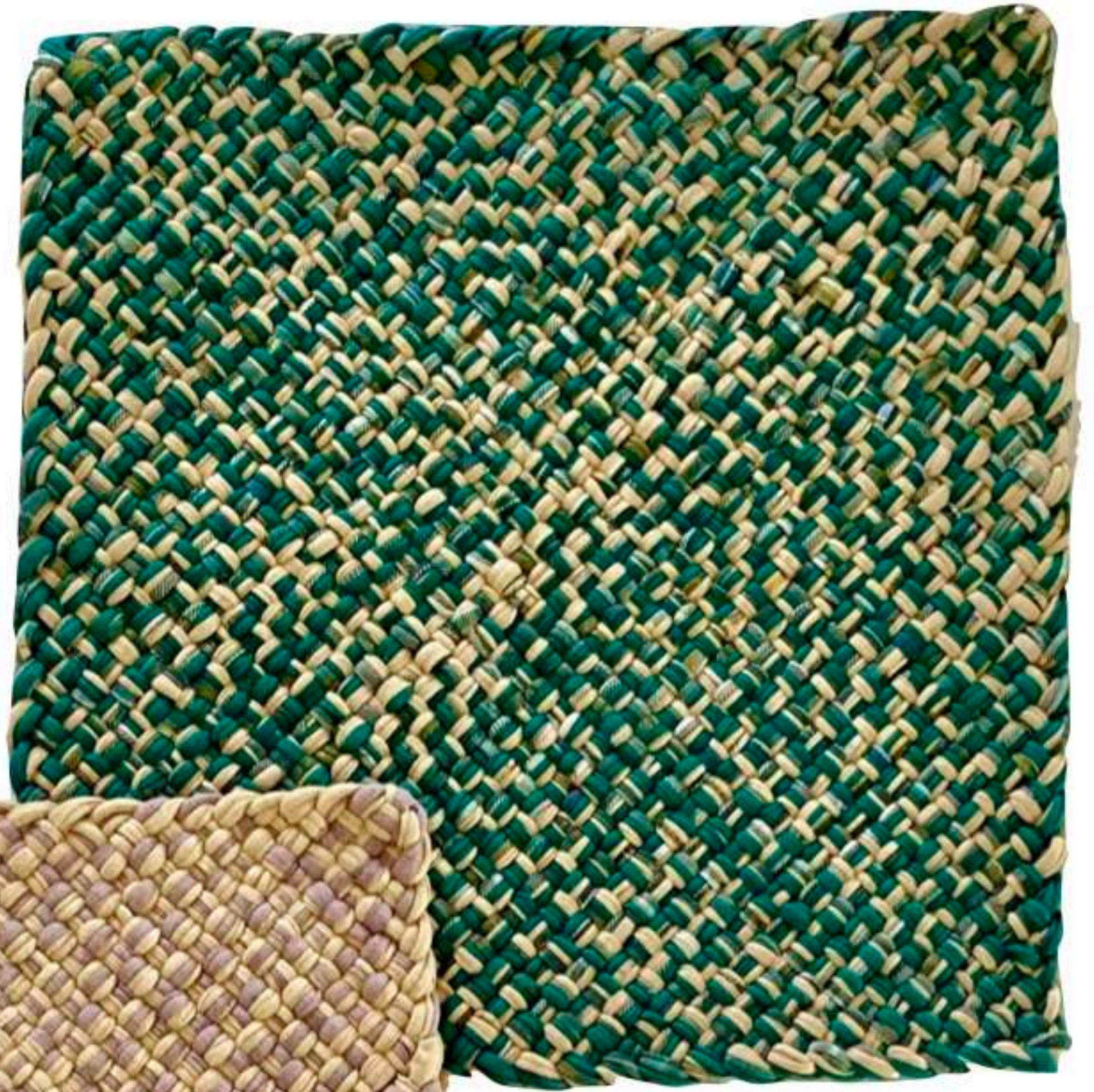
14" X 14"

Rs 1499/-

**SET OF 4
DINING MATS**



Green, Blush,
Old Rose, Beige



14" X 14"

Rs 1499/-

Blue, Black & White

Adding cheer to the dining experience!!
Our **set of 4 dining mats** makes for a trendy table decor setting



14" X 14"

Rs 1499/-

Blue, Pink & White

Our **set of 4 dining mats** make for a trendy table decor setting. Zero use of mechanisation renders a slight variation & an aesthetic charm to every article.



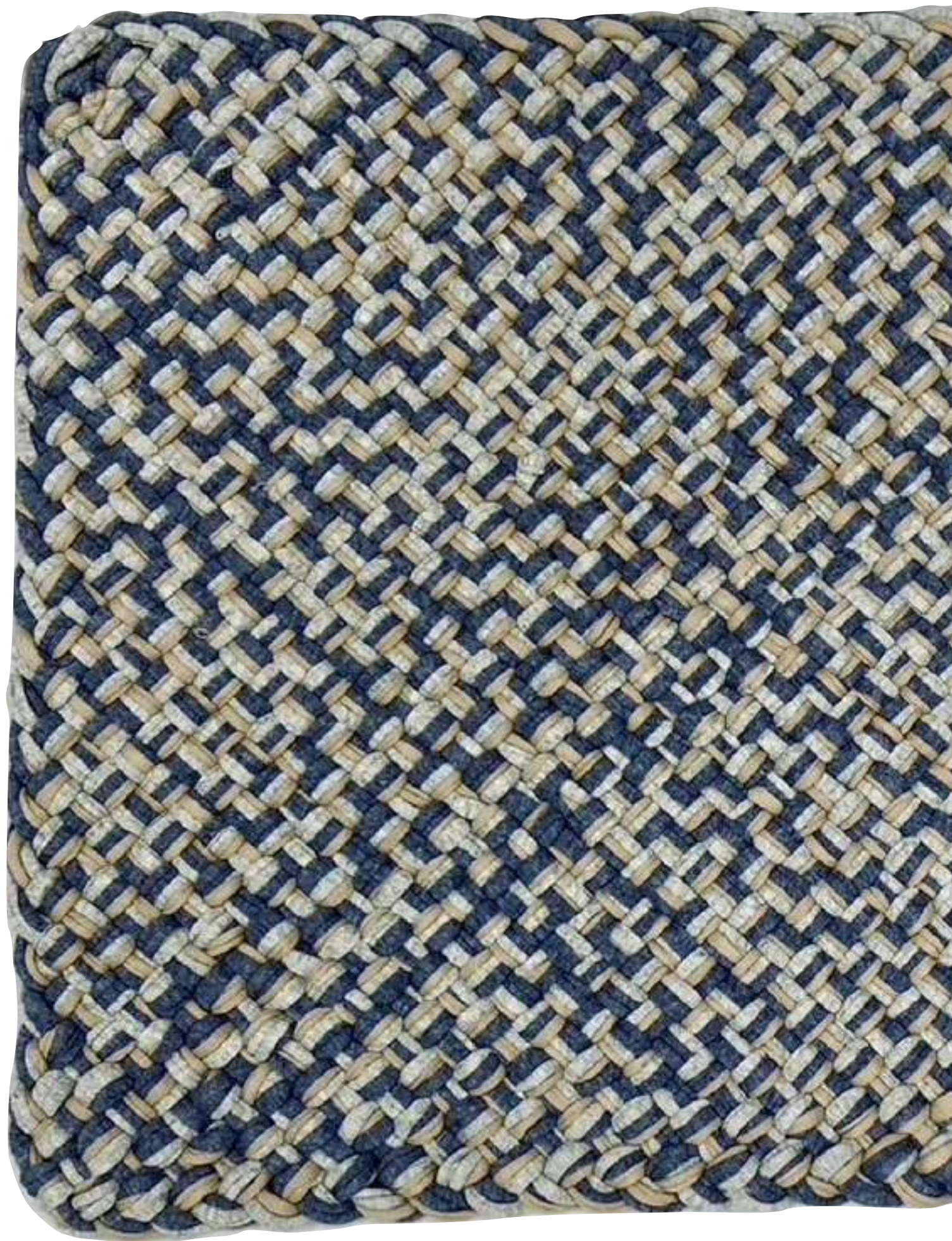
14" X 14"

Rs 1499/-

Blue-melange,
Nude & Grey

set of 4 dining mats

The use of 100%
cotton hosiery yarn
woven in layers make
the mats very durable



14" X 14"

Rs 1499/-

Yellow & Black

Our **set of 4 dining mats** are made using 100% cotton hosiery yarn woven in layers making them very durable & absorbent.

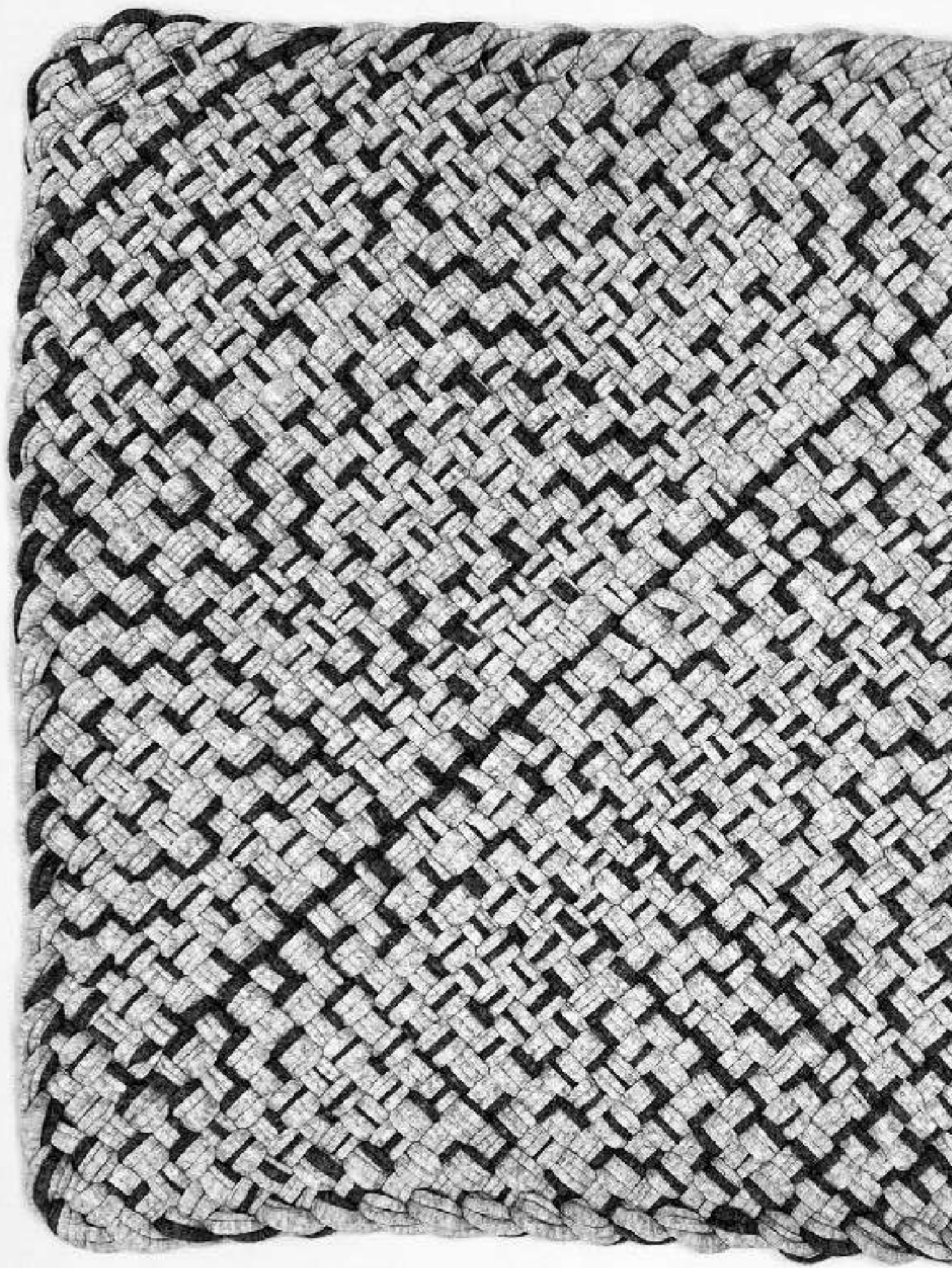


14" X 14"

Rs 1499/-

Grey & Charcoal

Set of 4 dining mats are highly absorbent leaving the surfaces dry at all times. Washable & easy to maintain.

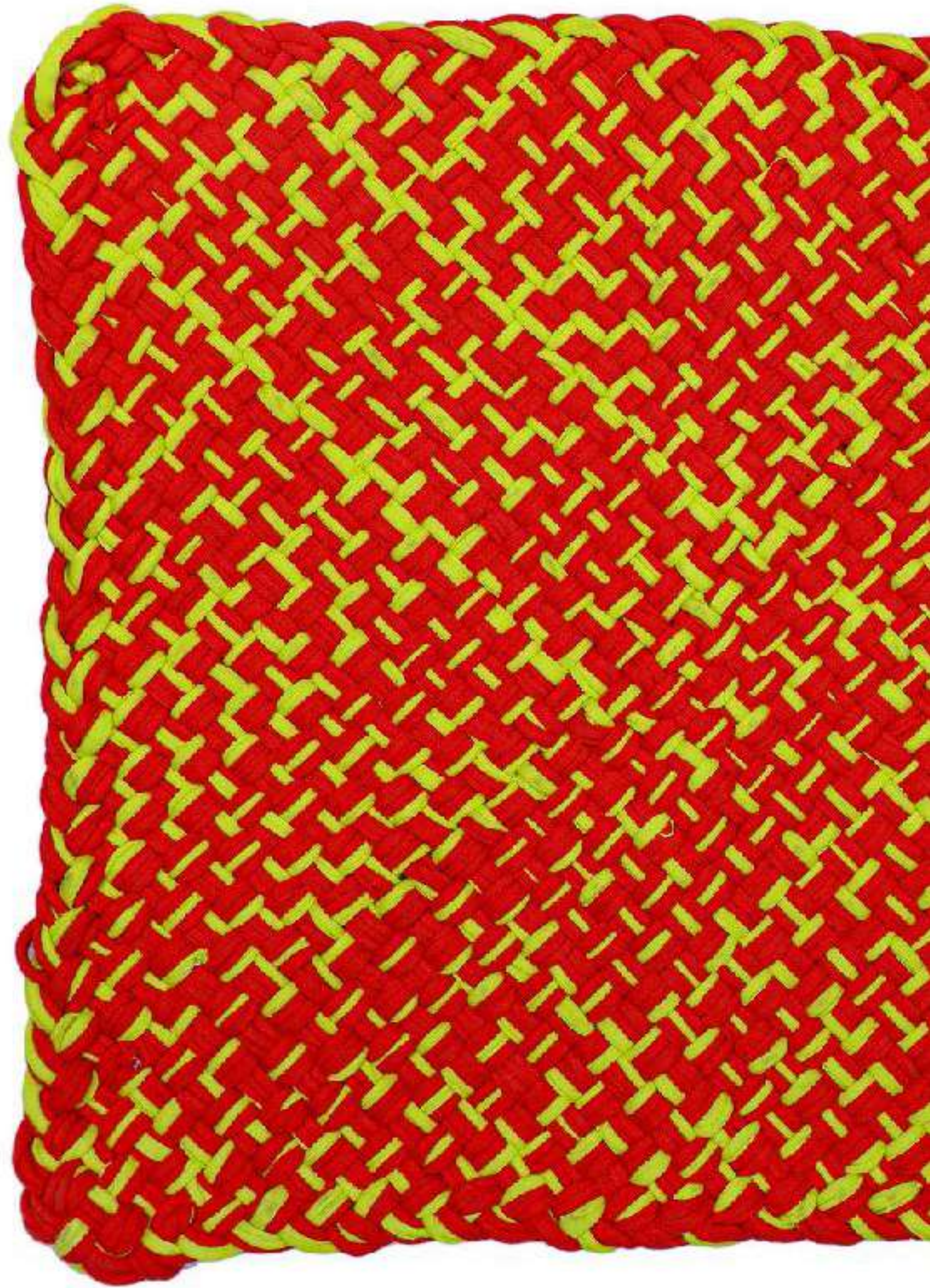


14" X 14"

Rs 1499/-

Neon Yellow & Red

Set of 4 dining mats.
Our team follows high standards of quality control, fabric check, colour, strength & knitting style.



14" X 14"

Rs 1499/-

Charcoal,
Nude & Grey

Our **set of 4 dining mats** are handwoven by rural women on wooden looms following strict quality control.





The use of 100% cotton hosiery yarn woven in layers make the mats very durable. These Mats are highly absorbent, thus leaving the surfaces dry at all times. Washable & easy to maintain.

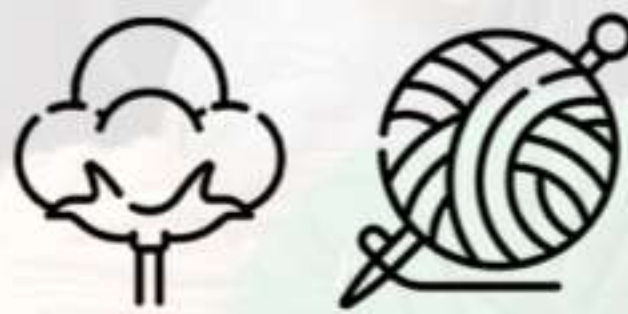
AT PROJECT 1000 WE WORK TOWARDS ACHIEVING TRULY SUSTAINABLE PRODUCTS

- All the fabric yarn we use is either 100% *Natural Cotton* or *Functional* (a combination of fibres from cotton, bamboo, hemp, recycled pet bottles, etc).
- Some of this fabric yarn has been processed using 100% Natural Herbal Dyes.
- All our Hosiery Fabric Yarn is obtained from salvages from our fabric knitting and processing unit certified by BCI & GORTEX, Higg Index and Cotton USA.
- **Our training program is based on UPCYCLING. Here, we creatively reuse the factory wastage to create aesthetic, usable, high-quality Home Decor and Lifestyle products.**
- We wish that people indulge in *Responsible Shopping* and *Responsible Gifting*. We need customers to support small businesses that empower rural artisans. This would boost skill development and result in GAINFUL EMPLOYMENT. It is the first step towards alleviating poverty.
- Furthermore, we aim to popularise sustainable living by creating products having multiple uses. This makes it easier for customers to REUSE products instead of quickly disposing of them. This would create more value and be the first step towards achieving zero wastage.

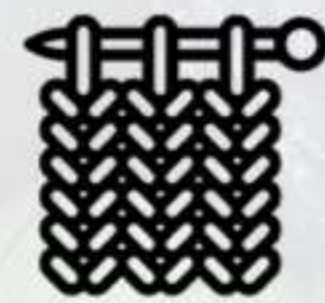
All Products are



Handmade by
Rural Women



100% Cotton
Hosiery Yarn



Tightly Woven



Washable, Zero
Colour Fading



Super Absorbent



Zero
Mechanisation

Made in





The skillful weaves attained by the deft and nimble fingers of the empowered women of Murbad have created such a beautiful tapestry over the years that instantly brings to mind the rich colours and ethereal beauty of paintings of the Great Masters. Our designs have imbibed bold and vibrant colours. Inspiration drawn from nature itself, in line with our philosophy of closeness to mother nature. The excellence of the great artists was in the propriety, beauty and majesty of their characters in the painting, and in the correctness of drawing and purity of taste. These are cornerstones for Project 1000 while designing products, with great emphasis on propriety and purity of design and utility.

PROJECT 1000[®]

Initiative of
SHANTI SEVA NIDHI



Dhanivali Village, Ghatt No. 366 to 370.
Taluka Murbad, Thane District,
Maharashtra 421401, India



ritu.saraf@technocraftgroup.com



www.project1000.org.in



<https://www.youtube.com/@project1000/videos>



<https://www.facebook.com/project1000ssn>



https://www.instagram.com/project_1000_by_ssn/